

A topographic map of the Great Lakes region in North America, showing the five Great Lakes (Superior, Michigan, Huron, Erie, and Ontario) and the surrounding landmasses. The map uses a color gradient from light tan to dark blue to represent elevation and water levels. The text "M/V LAKE SUPERIOR Sinking" is overlaid in large, bold, black font across the upper portion of the map.

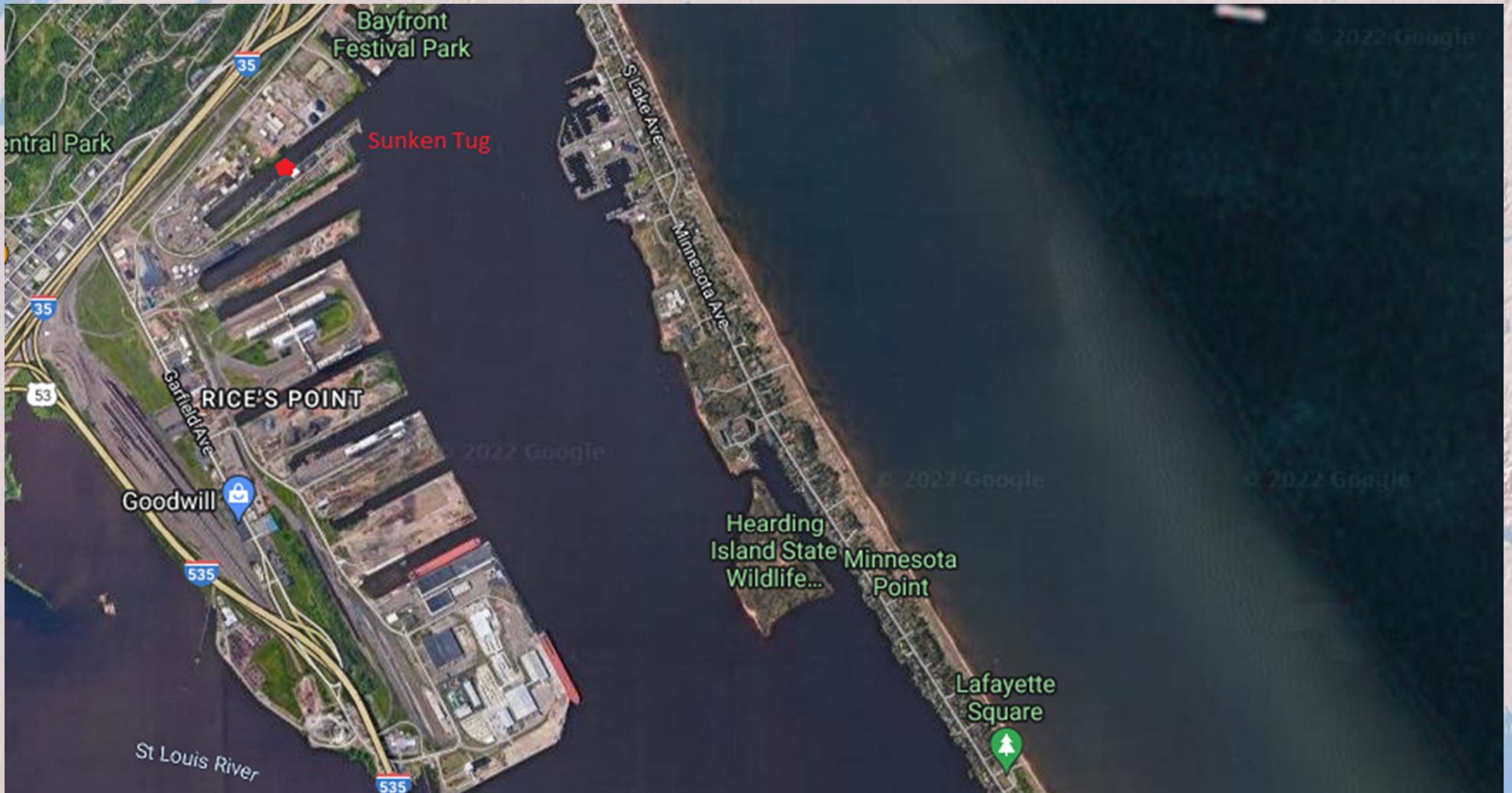
M/V LAKE SUPERIOR Sinking

March 21, 2022

Background









22 March: Owner was contacted and made a good effort to pump the vessel off using a good Samaritan with equipment. Owner reported approx. 7500 gallons of oil product on board.



24-25 March,
At this point, the vessel started discharging very thick oil that caused a sheen on the water. Master salvor and Naval Architect working for T and T Marine arrived from TX. With the help of a local sub-contractor the vessel was boomed off and sorbent pads were placed on the surface to catch the oil.

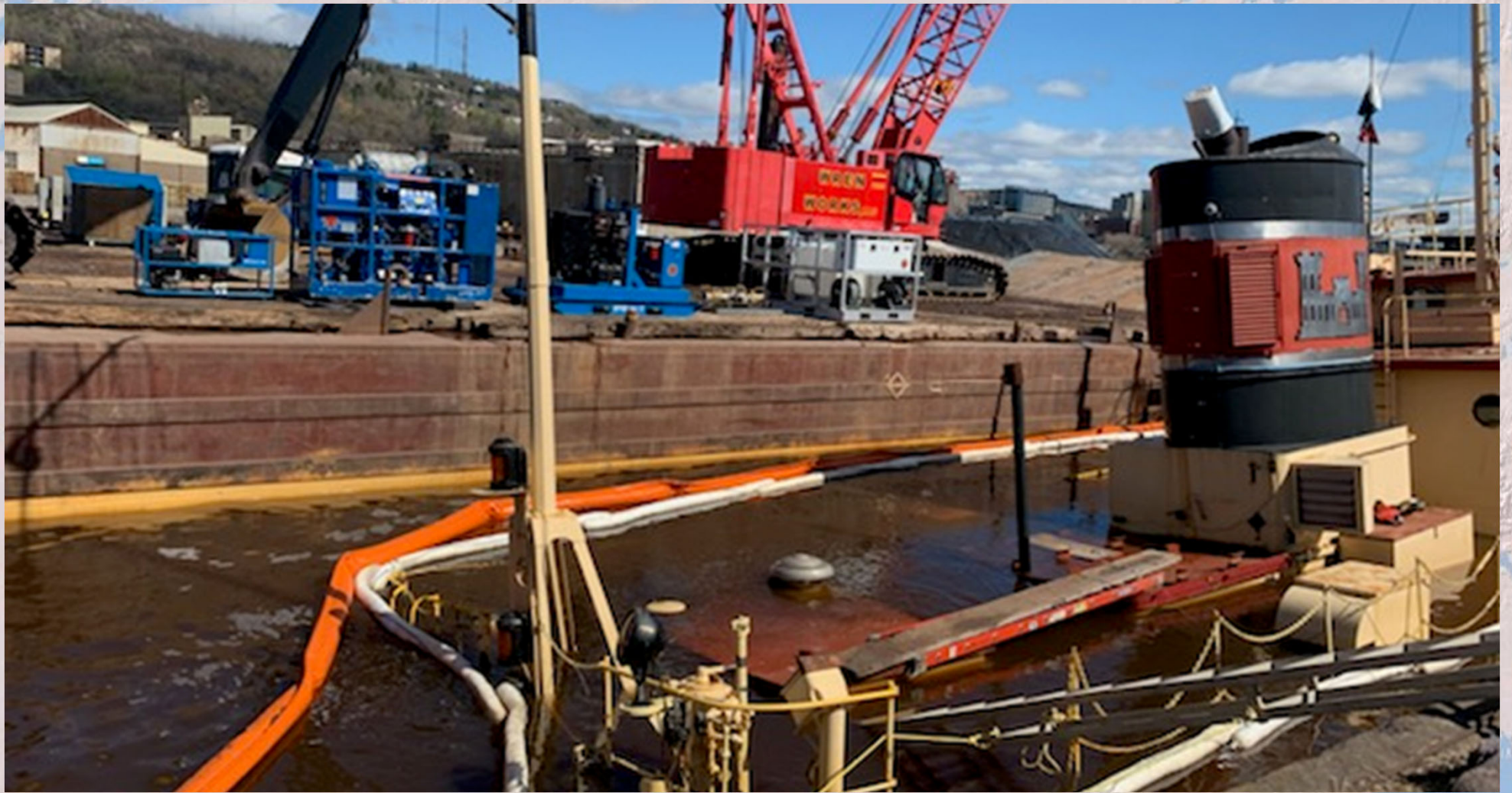


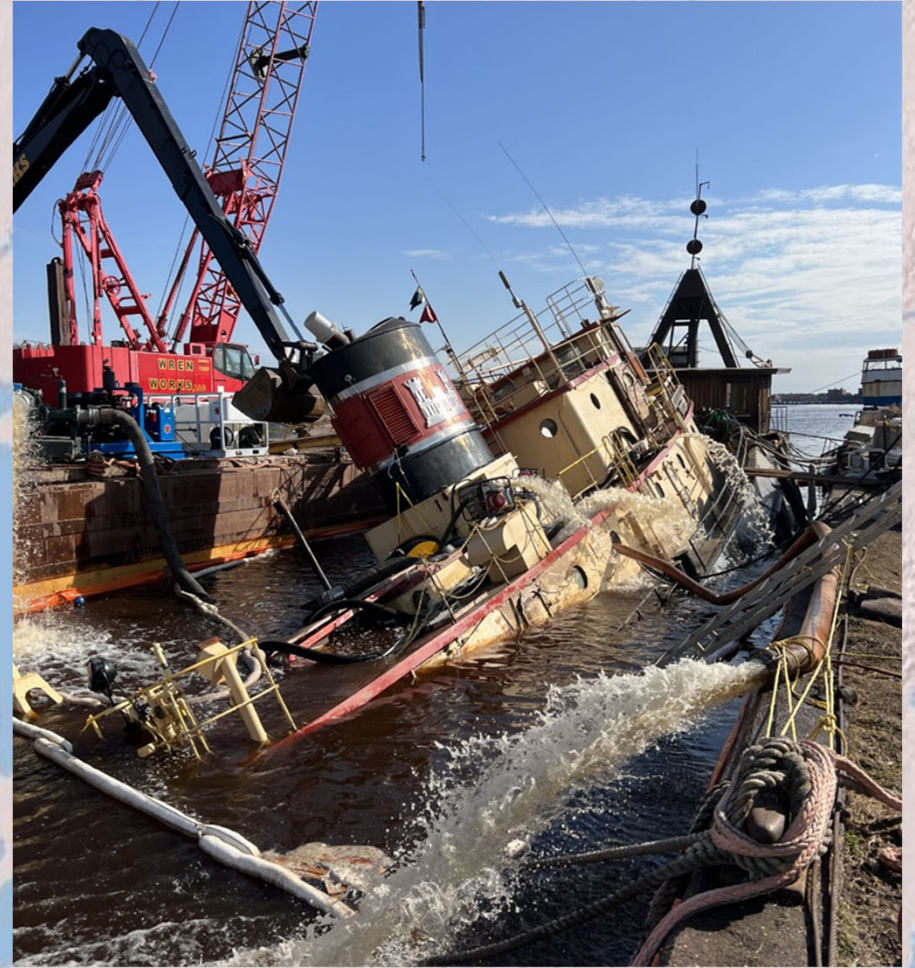


And then we waited...

Due to the ice, vessel was closed off, all doors and portholes shut. T and T Marine returned to Texas and the subcontractor demobilized. A two-man team was left behind to tend to the boom and replace sorbent pads. CG personnel visited the vessel daily for status checks.









M/V LAKE SUPERIOR End Result

- **Total days on site: 67 days**
- **Final cost: \$901,000**
- **Currently, the vessel is still floating, just in a different location in the same area. The CG cannot salvage a vessel therefore all of the environmental hazards were mitigated, and the vessel was left for the owner to take care of.**